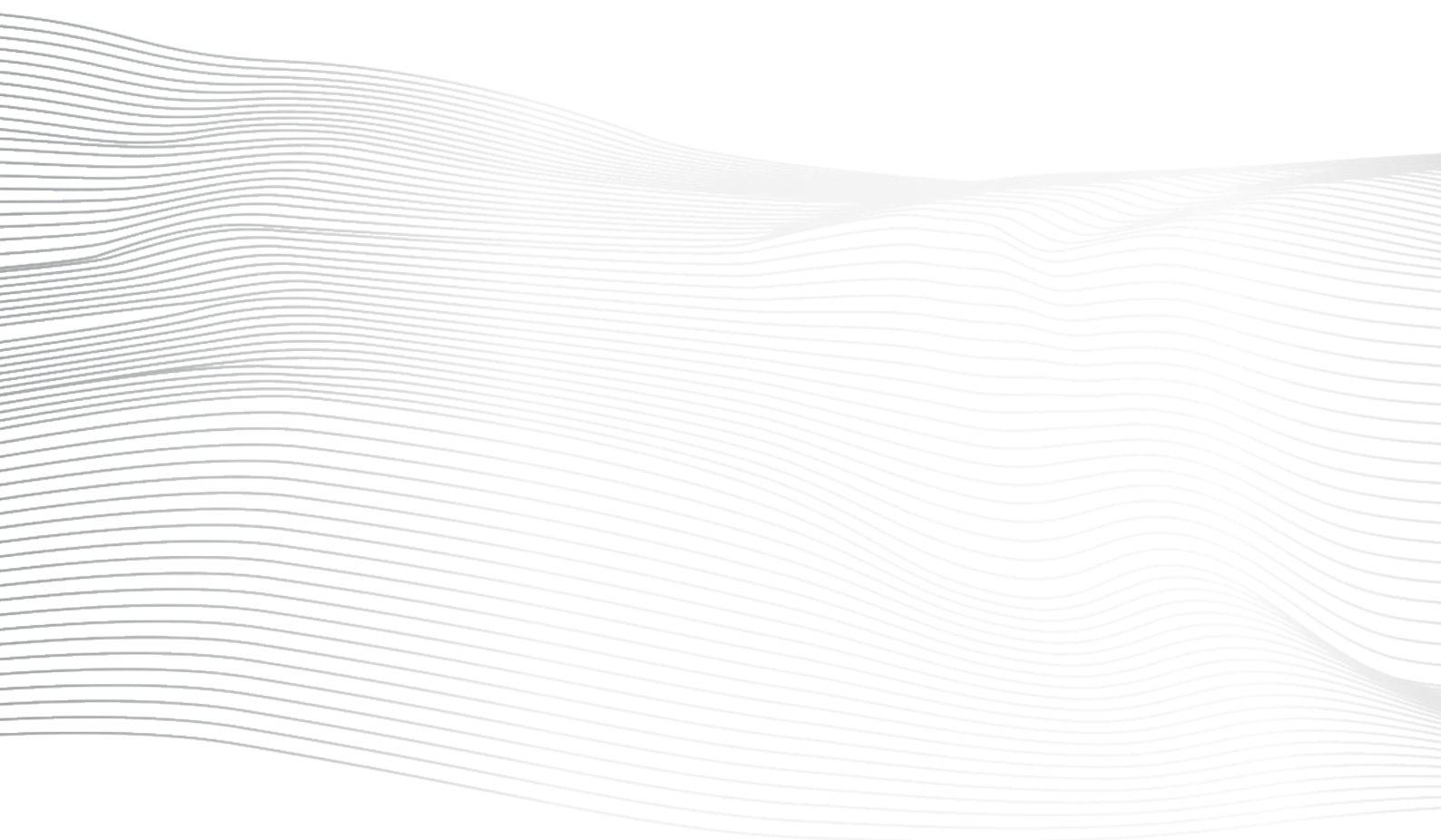

RUDDER ANGLE INDICATOR

RAI



sm electrics



safety on board.



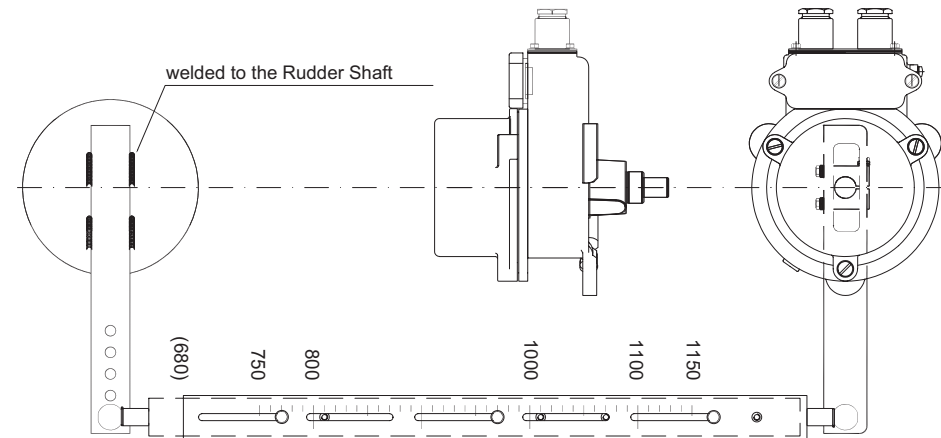
RUDDER ANGLE INDICATOR

RAI

Picking up and carry on the tradition of HAGENUK, Stein Sohn and Interschalt as rudder angle indication systems provider, deeply established into the market under the brand name „A070“, sm electrics is covering all required equipment. Rock solid transmitter technology as well as diversified indicator family are available as spare part requests just as well as full system replacements.

made
in
Germany

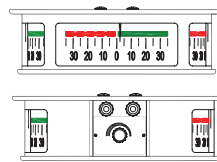
**lever drive ruddershaft with
rudder angle indication transmitter**



PERIPHERY EQUIPMENT

RUDDER ANGLE INDICATION

2080101042

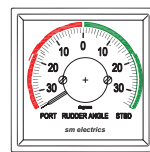


RAI | A070.718-99xxx

- ø 400mm x 120mm
- 24VDC
- signal: 4-20mA; angle range: $\pm 35^\circ/\pm 45^\circ$ (further angle ranges on request)
- IP 66

RUDDER ANGLE INDICATOR desk mounting

2080101025



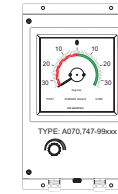
RAI | A070.752-98xxx

- 24VDC power supply
- 96 x 96mm
- signal: 4-20mA, load 27Ω , angle range: $\pm 35^\circ/\pm 45^\circ$ (further angle ranges on request)
- IP 23

PERIPHERY EQUIPMENT

RUDDER ANGLE INDICATOR wall mounting

2080101036

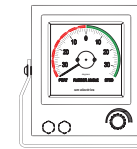


RAI | A070.754-99xxx

- 24VDC power supply
- signal: 4-20mA, angle range: $\pm 35^\circ/\pm 45^\circ$ (further angle ranges on request)
- IP 66

RUDDER ANGLE INDICATOR wall mounting

2080101038

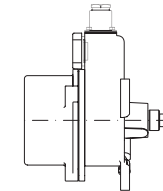


RAI | A070.754-99xxx

- 24VDC power supply
- signal: 4-20mA, angle range: $\pm 35^\circ/\pm 45^\circ$ (further angle ranges on request)
- IP 66

RUDDER ANGLE INDICATION TRANSMITTER

2080099267

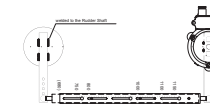


RAI | A070.300-xx0xx

- 24VDC power supply
- signal: 4-20mA, angle range: $\pm 35^\circ/\pm 45^\circ$ (further angle ranges on request)
- IP 67

LEVER DRIVE RUDDERSHAFT - TRANSMITTER

2019999322

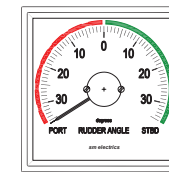


RAI | A070.030-00000

- 285/600 - 800/285mm adjustable

RUDDER ANGLE INDICATOR desk mounting

2200000058



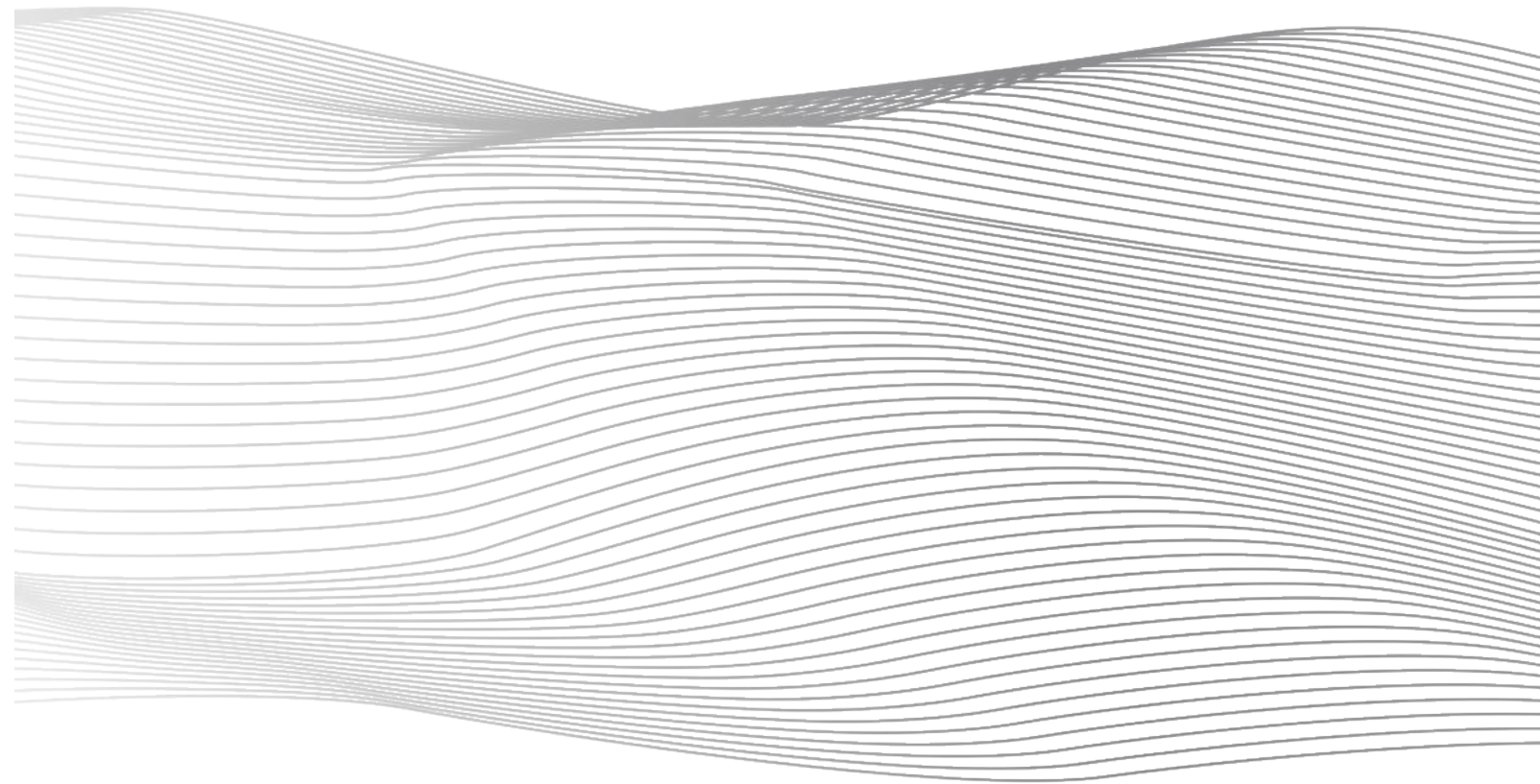
RAI | A070.754-98xxx

- 24VDC power supply
- 144 x 144mm
- signal: 4-20mA, load 27Ω , angle range: $\pm 35^\circ/\pm 45^\circ$ (further angle ranges on request)
- IP 66



KEEPS YOU ON COURSE.

Rudder Angle Indicator



CONTACT

+49 4344 819 23 10
info@sm-electrics.de
www.sm-electrics.de

POSTAL ADDRESS

Am Wulfsberg 17
24217 Stakendorf
Germany

OPERATIVE LOCATION

Eichkamp 30
24217 Schoenberg
Germany



sm electrics

